

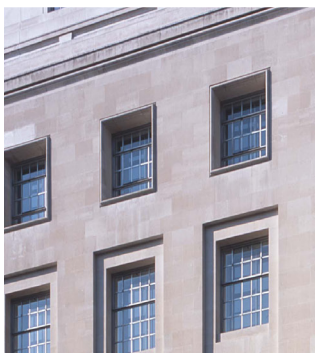
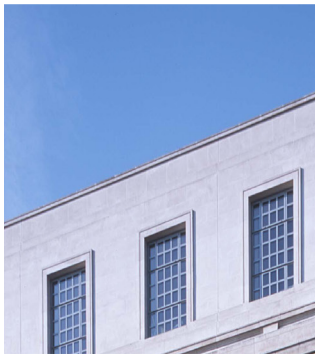
**Want to save energy?**

**Want to reduce your electricity bills?**

**Want to reduce your carbon footprint ?**

**Need to improve your DEC rating?**

**Considered Voltage Optimisation?**



“Voltage Optimisation” is the reduction of a buildings’ supply voltage to one which better suits the requirements of the equipment installed within it.

Since 1995 the UK’s electricity supply has been harmonized with the voltages across Europe to be 230v +6% -10%.i.e a range of 216 to 252v.

**The average UK supply voltage is 242v.**

Most equipment in use in the UK is manufactured to operate at the European average voltage of 220v.

Operating equipment at a higher voltage than necessary provides no equipment performance benefit but results in significantly higher energy consumption, increased heat losses and reduced life expectancy.

“Optimising” the supply voltage to a level closer to the optimum 220v design figure results in significant energy savings, lower electricity bills, reduced carbon emissions and improved life expectancy of the equipment.

In our experience energy savings for a “voltage optimised” installation can be anywhere between 8 and 20% depending upon the existing site supply voltage, the nature of the clients business and the installed equipment.

## **Banyard Consultants are working with:**

Defra, Cefas, Animal health, the Rural Payments Agency and the London Borough of Camden to introduce Voltage Optimisation to their estates and buildings.

To date we have provided technical advice and support to our clients for the installation of Voltage Optimisation equipment across 18 sites nationwide with a further 28 in the planning and procurement stage.

**Call us now on 01732 467000**  
to arrange a consultation.

For more information please visit us at:  
**[www.banyards.co.uk](http://www.banyards.co.uk)**